

# Diesel Parts Identification for Warranty Purposes



# Table of Contents

FJ489.....	6	FJ1010.....	9	IP20.....	14
FJ495.....	5	FJ1229.....	9	IP21.....	13
FJ595.....	2	FJ1230.....	9	IP22.....	13
FJ596.....	2	FJ1310.....	9	IP23.....	13
FJ738.....	2	HPI1.....	10	IP24.....	13
FJ926.....	2	HPI2.....	10	IP25.....	15
FJ927.....	3	HPI3.....	10	IP26.....	15
FJ928.....	3	HPI4.....	10	IP27.....	15
FJ932.....	8	HPI6.....	11	IP28.....	15
FJ933.....	8	HPI7.....	12	IP31.....	13
FJ960.....	4	IP1.....	15	IP32.....	13
FJ961.....	7	IP10.....	15		
FJ962.....	7	IP12.....	15		
FJ1009.....	9	IP19.....	14		

# 7.3L Ford Powerstroke Injector Identification

## SMP Product

- FJ595, FJ596, FJ738, FJ926
- Metal plate on top of the solenoid laser etched with the SMP logo or Pure Power logo
- Older production have SMP logo etched on the collet



## NON-SMP Product

- No metal plate with logo on top of the solenoid.
- Hand etched number on the collet



# 6.0L Ford Powerstroke Injector Identification

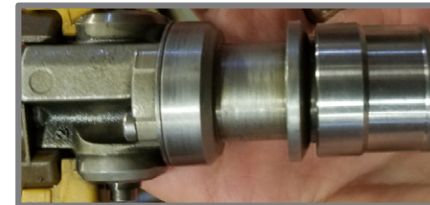
## SMP Product

- FJ927, FJ928
- Have the Pure Power Technologies logo etched on the body of the injector
- Earlier SMP product carried SMP logo and date codes that are etched into the body of the injector as seen in the image on the right



## NON-SMP Product

- No Pure Power logo or SMP markings



# 6.4L Ford Powerstroke Injector Identification

## SMP Product

- FJ960
- Have the Pure Power Technologies logo etched on the body of the injector



## NON-SMP Product

- No Pure Power logo or SMP markings





# 6.6L Duramax Injector Identification (FJ495)

## SMP Product

- FJ495
- Multiple styles of GM 6.6L Duramax injectors
- SMP logo is laser etched on the body of the injector



## NON-SMP Product

- No SMP markings



# 6.6L Duramax Injector Identification (FJ489)

## SMP Product

- FJ489
- Multiple styles of GM 6.6L Duramax injectors
- SMP logo is laser etched on the body of the injector



## NON-SMP Product

- No SMP markings



# 6.6L Duramax Injector Identification (FJ961, FJ962)

## SMP Product

- FJ961, FJ962
- Multiple styles of GM 6.6L Duramax injectors
- SMP logo is laser etched on the body of the injector



## NON-SMP Product

- No SMP markings





# 5.9L Dodge Cummins Injector Identification (FJ932, FJ933)

## SMP Product

- FJ932, FJ933
- The SMP logo is laser etched on the body of the injector



## NON-SMP Product

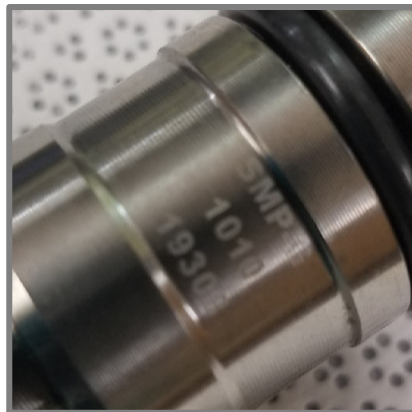
- No SMP markings



# 6.7L Dodge Cummins Injector Identification

## SMP Product

- FJ1009, FJ1010, FJ1229, FJ1230, FJ1310
- SMP logo is laser etched on the body



## NON-SMP Product

- No SMP marking
- May have hand etched numbers on the body.



## 7.3L Ford Powerstroke HPOP Identification

### SMP Product

- HPI1, HPI2, HPI3, HPI4
- SMP logo is etched on the end cap



### NON-SMP Product

- No SMP markings



# 6.0L Ford Powerstroke HPOP Identification

## SMP Product

- HPI6
- SMP logo is etched on the end cap



## NON-SMP Product

- No SMP markings

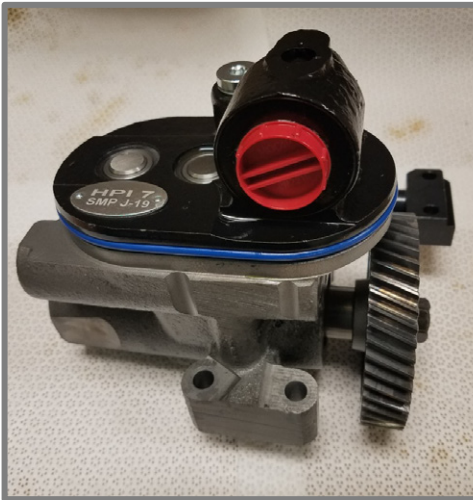




# 6.0L Ford Powerstroke HPOP Identification

## SMP Product

- HPI7
- SMP logo is etched on a small placard attached to the top of the unit
- Early units use a rectangular placard  
Later units are oval in shape



## NON-SMP Product

- No SMP markings



# 6.6L GM & 6.7L Dodge Injection Pump Identification

## SMP Product

- IP21, IP22, IP23, IP24, IP31, IP32
- SMP logo and part number are stamped into the body of the pump



## NON-SMP Product

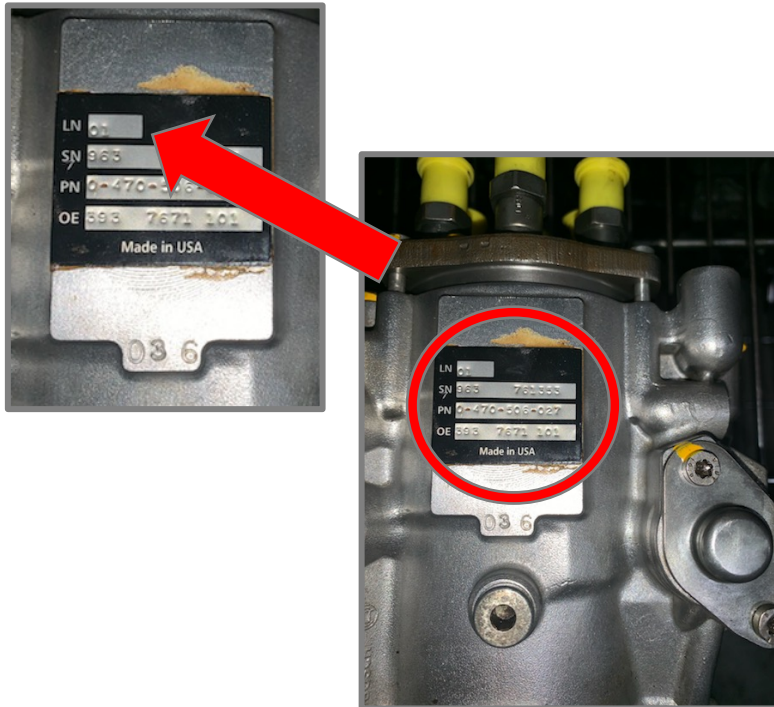
- No SMP markings



# 5.9L Dodge Cummins VP44 Injection Pump Identification

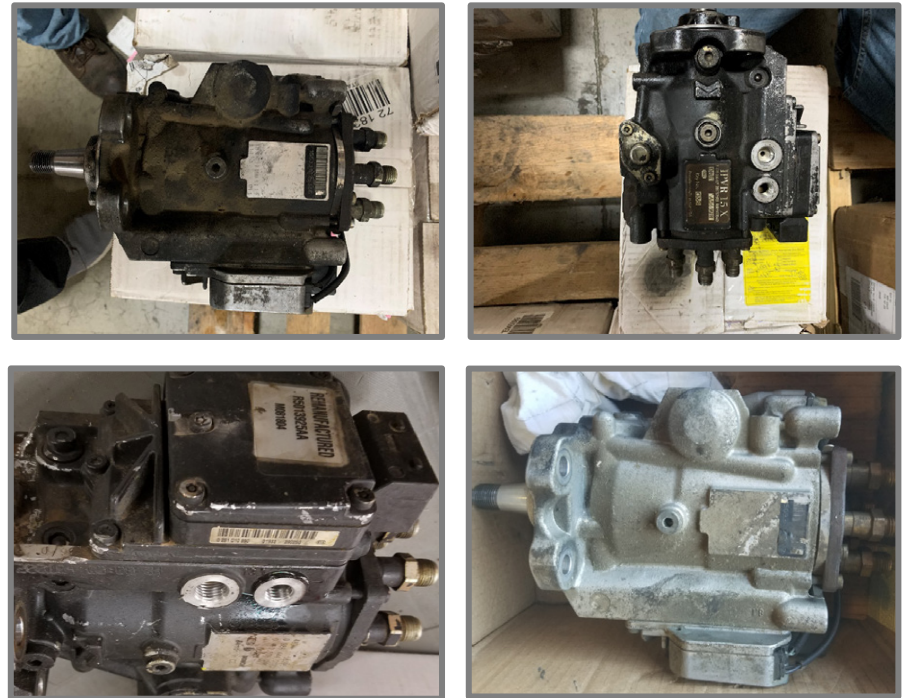
## SMP Product

- IP19, IP20
- “01” designation in the top space of the placard



## NON-SMP Product

- No SMP markings
- No “01” designation





# 6.2L/6.5L GM – 6.9L/7.3L Injection Pump Identification

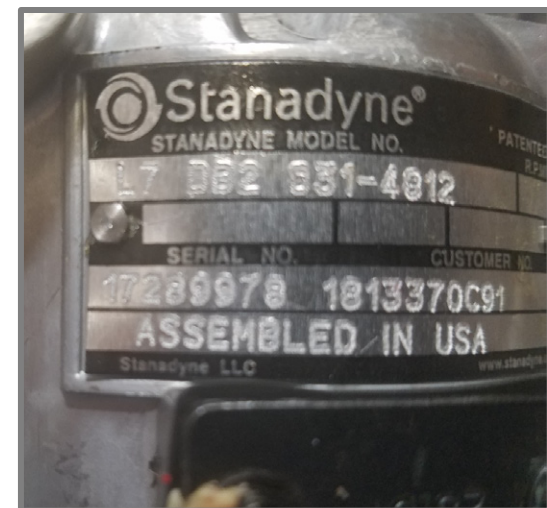
## SMP Product

- IP1, IP10, IP12, IP25, IP26, IP27, IP28
- SMP name and part number stamped on Stanadyne logo



## NON-SMP Product

- No SMP markings





# SMP Identification for Balance of the SMP Diesel Line

- Prior to the current identification process that is in use today, SMP used the SMP logo accompanied by a letter designation and a Julian date code.
- A sample would look like this: **“SMP-A 495 16321”**
- The letter after the SMP logo may vary, sample letter codes are: **A, B, C, D, E, F, G**. Any of these letter codes with “SMP” before them confirms that this is SMP product.
- These are primarily be found on injectors, high pressure oil pumps and high-pressure injection pumps. Products with these types of date codes and identification are older production and have worked their way through the system but they occasionally show up and should be properly identified and handled accordingly.
- **Be sure to properly identify parts before submitting for warranty.**
- If there is a question about product source, contact your local SMP representative.